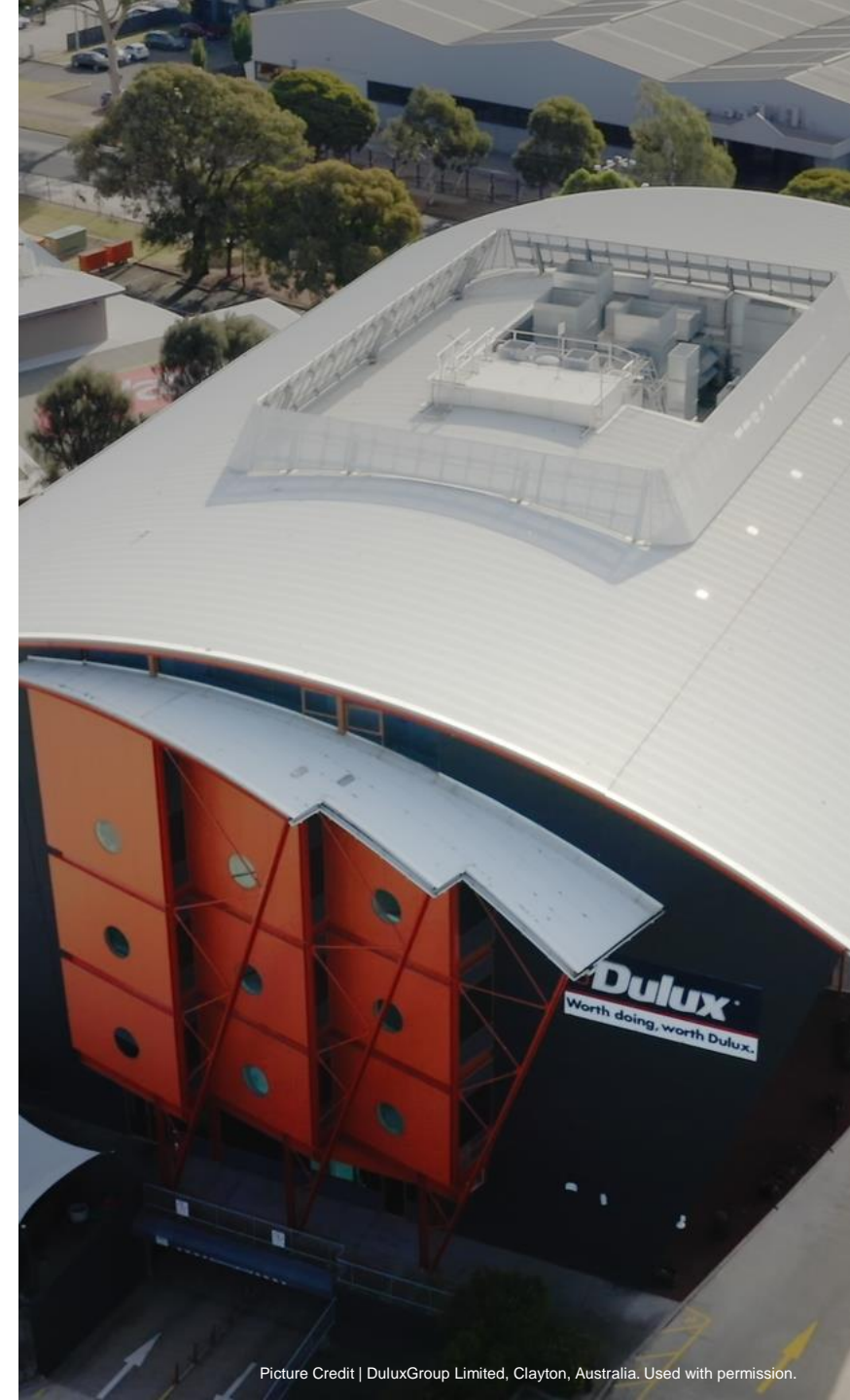




How Can an Innovative Cloud-Based Integration Shape a Modern and Hybrid IT landscape?

Collaborating with stakeholders and customers to migrate a mature Cloud Integration environment to a new technology stack.

DuluxGroup is a large company with a diverse portfolio of brands that encompasses everything related to protecting, maintaining and enhancing the spaces in which people live and work, from household paint to flower seeds. To future-proof its IT landscape and enhance it with new capabilities, DuluxGroup had plans to upgrade its current integration environment to the newest technology over the coming years, however unexpected contractual changes forced them to make this move at an expedited pace, managing to undertake a landscape transformation in record time. Also explore the new features and opportunities the BTP platform offers.



Improving sustainable management of financial, environmental and social impacts with help of SAP® Integration Suite



Before: Challenges and Opportunities

- Digital transformation and a modern IT landscape are fundamental to the success and well-being of DuluxGroup business to deliver its vision of "A Future Without Harm"
- A desire to move our existing Cloud Integration tenant off the NEO environment to Cloud Foundry
- An unexpected announcement that due to contractual reasons we could not continue to use our existing NEO BTP

Why SAP and Migration approach

- Optimal implementation of all business processes by leveraging the Cloud Integration, API Management, Event Mesh, and Integration Advisor capabilities of SAP® Integration Suite
- Quick migration from the Neo Environment to the Cloud Foundry Foundation leveraging SAP integration Suite's [migration accelerator](#) and [migration guide](#) ease the upgrade to a future-proof integration platform
- Fast migration process by team of 6 people using only 50 - 80% of their time while managing a high workload of other projects and support duties

After: Value-Driven Results

- Introduction of a three-tier landscape to enable better governance practices in the integration space
- Explore new features available in the SAP BTP Cloud Foundry environment to seamlessly integrate SAP and Non-SAP systems, including Non-SAP to Non-SAP systems, whether on-premise or in cloud, by prepackaged content, especially AI content of SAP Integration Advisor
- Always up-to-date platform with highest security standards, enormous scalability, and quick support
- Zero downtime by leveraging the High Availability option and hyperscaler's infrastructures

"Migrating from NEO to Cloud Foundry and the benefits that came from that transition greatly benefitted the supportability and development pipeline in the integration space. We should have done it two years earlier!"

Nicholas Wilson, Service Manager - Integrations, DuluxGroup Limited

150+

Integration flows migrated (from Neo environment to Cloud Foundry) and tested in development, validated in quality and deployed into production

4 month

Project period for migrating and testing all integration Flows from the NEO environment into the new cloud foundry landscape across all three tiers

DuluxGroup (Australia)
PTY LTD
Clayton, Australia
www.duluxgroup.com.au

Industry
Chemicals

Products and Services
Paint, Coating, and
Adhesive Manufacturing

Employees
>4,000

Revenue
\$1.52 billion

Featured Solutions and Services

SAP Integration Suite
SAP Business Technology Platform
SAP Experience Suite: SAP Sales Cloud, SAP Service Cloud
SAP SuccessFactors
SAP Integrated Business Planning
SAP Intelligent Spend and Business Network
SAP S/4HANA Cloud



Supporting innovation and new product development with **SAP Integration suite**

DuluxGroup had a desire to gain the benefits of the most modern Enterprise Integration Platform as a Service in the form of **SAP Integration Suite** on Cloud Foundry, however resource and time constraints stalled the organization's attempts to make the switch from their existing NEO platform. In 2020 contractual changes imposed the switch away from NEO and thus kick started a rapid transition from NEO to the new Cloud Foundry environment.

With help of SAP Integration Suite's [migration accelerator](#) and [migration guide](#) DuluxGroup experienced a solid launchpad for its migration. The guide helped them to handle the migration of their integration scenarios, services and related artifacts. Their migration journey included a Discover, Prepare, Migrate and Validate (Post-Migration) Phase. During this a three-tier environment (Dev, QA, Prod) was introduced to improve governance and workflows in the service. These activities were executed in parallel amongst a larger Digital Transformation the organization was undertaking, which made the smooth transition of the service of the upmost importance which was achieved thorough planning.

The iFlows were assigned to integration team members which enabled end to end accountability and autonomy giving them hands-on experience to learn the intricacies of Cloud Foundry. SAP experts were able to provide quick support to resolve any migration issues encountered.

“Meticulous planning and SAP accelerator tools helped with seamless migration with no unplanned disruption to business. Looking forward to explore BTP features to align strategic business imperatives with digital and technology transformation..”

Nilambari Waje, Enterprise Architect, DuluxGroup Limited

~500k

Messages per day
via Cloud Integration
capability of SAP
Integration Suite

Featured Solutions and Services

DuluxGroup finds smarter, market leading solutions to delight and inspire consumers and their retail and professional trade customers **with help of SAP solutions:**

- SAP Business Technology Platform
- SAP Integration Suite: Cloud Integration, API Management
- SAP Extension Suite
- SAP Experience Suite: SAP Sales Cloud, SAP Service Cloud
- SAP SuccessFactors
- SAP Analytics Cloud
- SAP Ariba
- SAP Integrated Business Planning
- SAP Intelligent Spend and Business Network
- SAP S/4HANA Cloud
- SAP BW/4HANA



SAP Software Architecture at Dulux Group

SAP Integration Suite

